

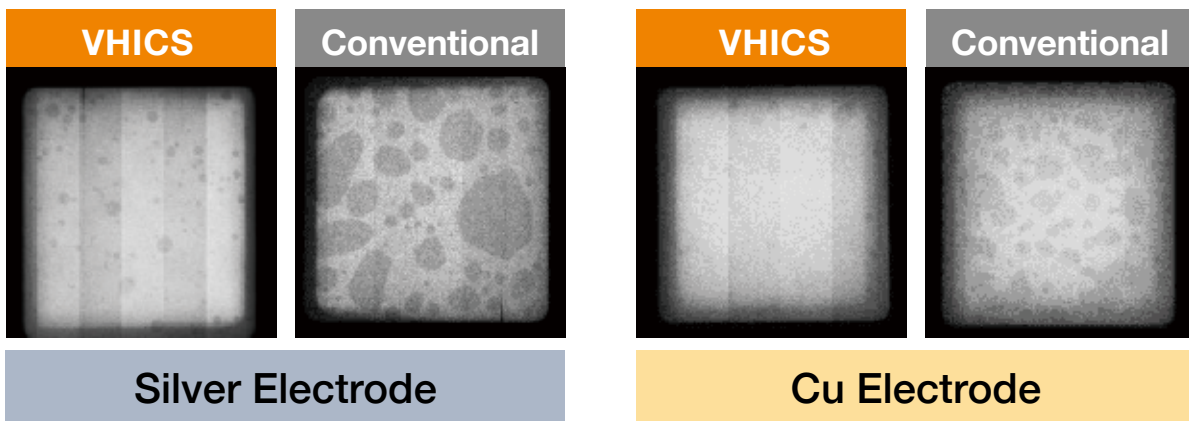
Low void generation of heatsink heat radiation bottom electrode, has superior residue cleaning characteristics

Characteristics

- Regardless of electrode, low void generation of bottom electrode
- No alteration of flux after reflow heating, offers superior cleaning performance
- Controls solder or flux spattering in reflow

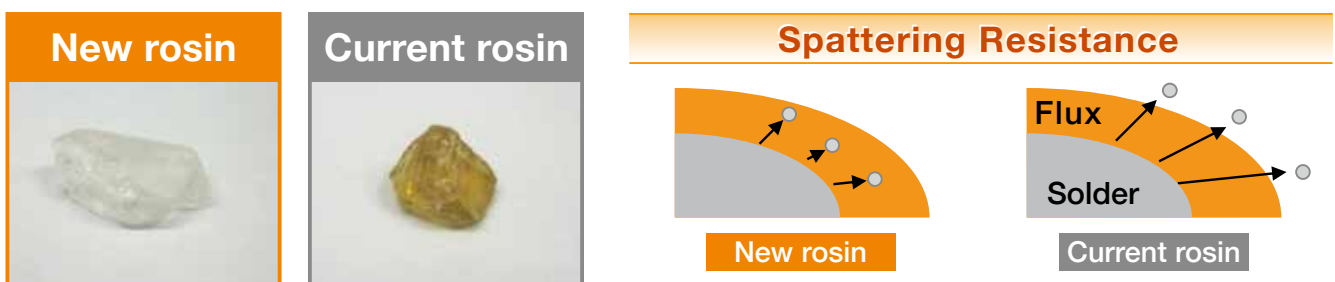
Void

- Void generation was controlled by choosing active agent suitable for electrode



Cleaning · Spattering Characteristics

- Control spattering by using strong adhesion rosin
- Use of newly developed rosin with superior heat resistance and strong adhesion performance



Cleaning characteristics



※Cleaning solution, Clean though 750HS (by Kao Corporation)

